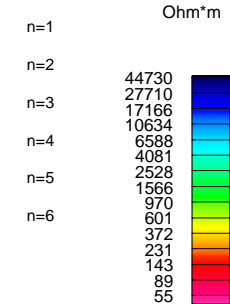
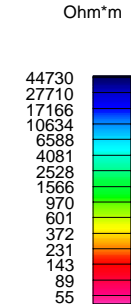


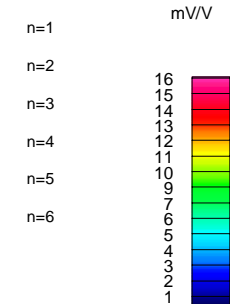
Apparent Resistivity



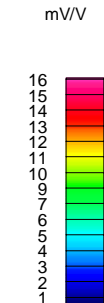
Resistivity Model



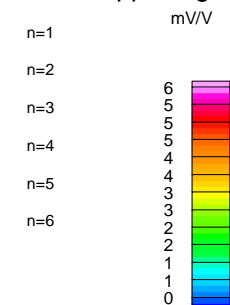
App. Chargeability



Chargeability Model

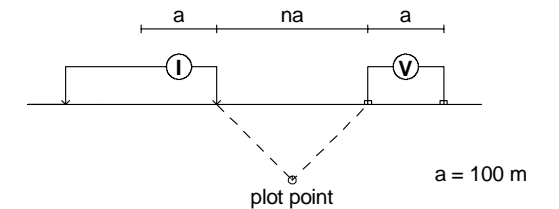


App. Chg. Error



COMPOSITE SECTION PLOT L4400S

Modified Pole-Dipole Array



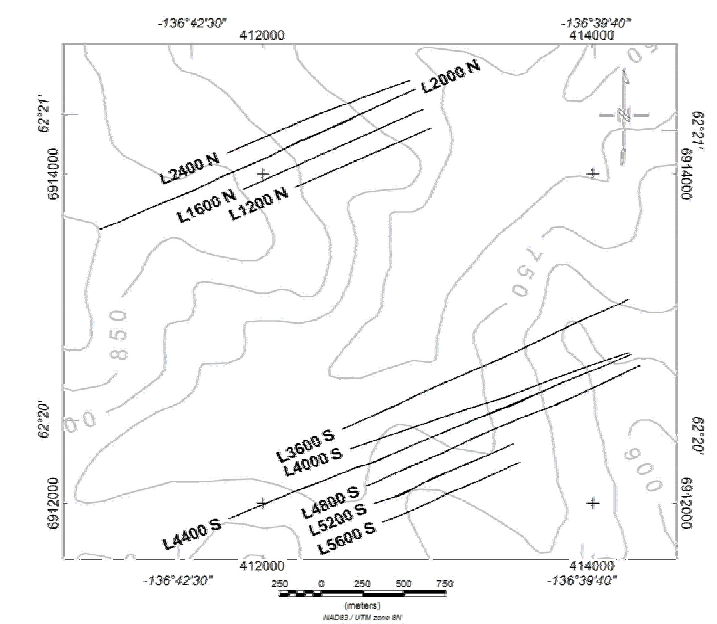
First Stationary electrode at 1000W (moving E).
Second Stationary electrode at 650E (moving E).

Receiver: Iris ElrecPro

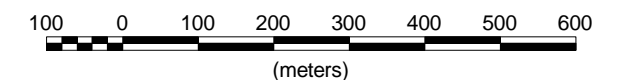
Transmitter: GDD Tx-II 3.6kW

Data File: Line 4400-100m-final.xyz

Dates Surveyed : April 29 - May 1, 2007
Aug 26 - Sept 10, 2007



Scale 1:10000



No Vertical Exaggeration

WESTERN COPPER CORPORATION

INDUCED POLARIZATION SURVEY
CARMACKS COPPER PROJECT
COMPOSITE SECTION L4400S - 100m DIPOLES

Mining District: Whitehorse
NTS: 115 I/07
Job: WRN-7506-YT

Datum: Local Grid
Drawn by: SW
Date: 28 Dec 07

AURORA GEOSCIENCES LTD.